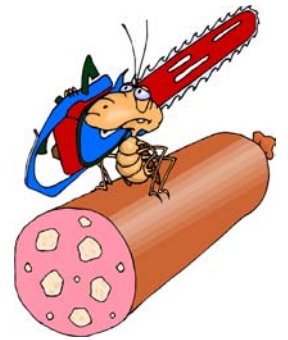
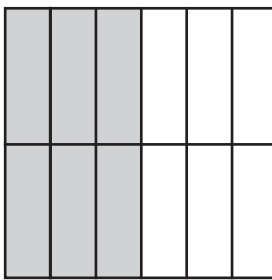


# Het vereenvoudigen van breuken



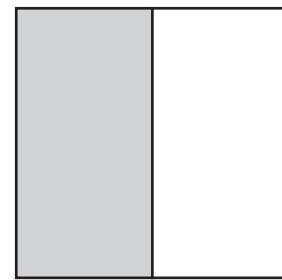
Vereenvoudigen: Er ontstaan minder delen, daarvoor echter grotere. De totale grootte blijft gelijk.



$$\frac{6}{12}$$



$$\frac{2}{4}$$



$$\frac{1}{2}$$

Vereenvoudig!



$$\frac{3}{12} = \frac{1}{4}$$

$$\frac{25}{100} = \frac{1}{4}$$

$$\frac{16}{32} = \frac{1}{2}$$

$$\frac{37}{9} = 4\frac{1}{9}$$

$$\frac{8}{14} = \frac{4}{7}$$

$$\frac{3}{9} = \frac{1}{3}$$

$$14\frac{24}{72} = 14\frac{1}{3}$$

$$\frac{88}{8} = \frac{11}{1} = 11$$

$$\frac{5}{4} = 1\frac{1}{4}$$

$$\frac{23}{8} = 2\frac{7}{8}$$

$$\frac{23}{46} = \frac{1}{2}$$

$$1\frac{16}{9} = 2\frac{7}{9}$$

$$\frac{250}{50} = \frac{5}{1} = 5$$

$$\frac{12}{3} = 4$$

$$\frac{15}{90} = \frac{1}{6}$$

$$\frac{13}{4} = 3\frac{1}{4}$$

$$\frac{105}{15} = 7$$

$$\frac{12}{39} = \frac{4}{13}$$

$$1\frac{20}{4} = 6$$

$$\frac{68}{34} = 2$$

Met welk getal werd hier vereenvoudigd?



Wordt hier eerlijk gedeeld?

$$\frac{35}{56} = \frac{5}{8} : 7$$

$$\frac{25}{75} = \frac{1}{3} : 25$$

$$\frac{32}{56} = \frac{4}{7} : 8$$

$$\frac{16}{18} = \frac{8}{9} : 2$$

$$\frac{8}{32} = \frac{1}{4} : 8$$

$$\frac{9}{21} = \frac{3}{7} : 3$$

$$\frac{12}{48} = \frac{1}{4} : 12$$

$$\frac{7}{77} = \frac{1}{11} : 7$$

$$\frac{5}{20} = \frac{1}{4} : 5$$

$$\frac{8}{14} = \frac{4}{7} : 2$$