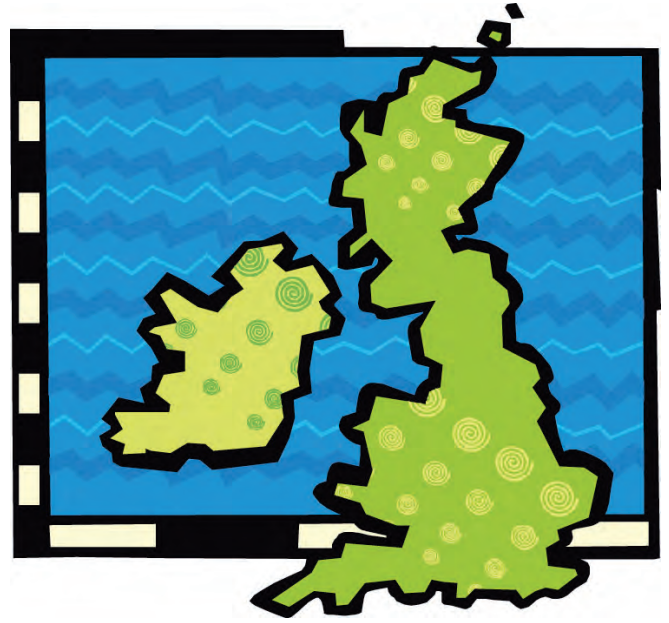


## Great Britain

Read the text carefully and answer the questions below:

Great Britain is situated in the north west of Europe. It is made up of 4 parts, **England, Scotland, Northern Ireland and Wales**. The Thames river flows through the heart of the capital, **London**. The **red double-decker buses**



which can be seen in London are very famous. The London police officers (nicknamed **Bobbys**) are also well-known. Britons really enjoy a nice cup of tea. One of London's most famous sites is the **Queen's** residence, **Buckingham Palace**. If the Union Jack can be seen waving by the palace this means that the Queen is at home.

Which 4 parts make up Great Britain?

---

The capital of Great Britain is \_\_\_\_\_

What is a London policeman also known as?

 Rooby

 Bobby

 Cops

What do Britons like drinking?

 coffee

 water

 tea

Where does the Queen live? \_\_\_\_\_

What colour do many of London's buses have? \_\_\_\_\_

Draw the Union Jack:

